



# Formalising Protected Areas in Solomon Islands



Agnetha Vave-Karamui & Trevor Maeda  
Environment & Conservation Division. MECDM  
*Regional Workshop on improving information and capacity for  
more effective Protected Area management in the Pacific,  
11-15 June 2018. Apia, Samoa.*



# National Context :

## MECDM, ECD and Protected Areas

- **UNCBD – NBSAP 2016-2020 – Target=10% Terrestrial & 15% Marine**
- **MECDM Corporate Plan 2018-2020**
  - *Safe, sustainable and resilient environment.*
  - *Conservation and Management of NRs.*
- **ECD: PA Act 2010 and Reg. 2012**
  - PA Work Program (*others – Forestry, Mines & Fisheries and Provincial Governments*)
  - : **Taboos, Managed Areas (LMMAs, CBRM), Reserves, Conservation or Protected Areas**
- Partnerships and collaborations – CBOs/NGOs, Research Institutions, Projects



# Key Biodiversity Areas (36)





- 2014-15: CBRM = **416 sites**
- PIPAP & WDPA = **95 PAs**  
**2.21% TPA (3%)**  
**0.12% MPA (1%)**

#### **Current work..**

- ❑ Applications for PA declaration = 5 PA Sites (8,800ha) - support from NRDF & ESSI & SICCP
- ❑ GEF/FAO – IFM Project : Target 5 sites =143,000ha (5%TPA coverage)
- ❑ Tetepare & Kolombangara (supported by WCS, ESSI, SICCP, WWFSI) – consultation stage

# PROTECTED AREAS ACT – Objectives / Classes

• An area of land or sea can be protected if:

- ✓ Significant genetic, cultural, geological and biological resources
- ✓ Unique and Important Habitats – plants and animals
- ✓ Special measures needed to be taken – e.g. *Threats from Logging, Mining or Damaging Activities*



▪ 5 Classes:

1. Nature Reserve
2. National Park
3. Natural Monument
4. Resource Management Area
5. Closed Area



# Identifying and Establishing PAs: – Communities, Provinces



## SOLOMON ISLANDS

INFORMATION AND GUIDELINES FOR WRITING A PROTECTED AREA MANAGEMENT PLAN

August 2015



# First national marine park launched

By Emma Masuku

The country's first national marine park has officially opened today.

The newly declared park covers 169,09 square kilometres in the southern Indian Ocean. The park is the first of its kind in the world and is a landmark in the country's marine conservation efforts.

The park is a testament to the country's commitment to sustainable development and the protection of its natural resources.

The park is a testament to the country's commitment to sustainable development and the protection of its natural resources.

The park is a testament to the country's commitment to sustainable development and the protection of its natural resources.



## Gov't assures Arnavon community of support

By Emma Masuku

The Government has assured the Arnavon community of its support for the newly declared marine park.

The Government has assured the Arnavon community of its support for the newly declared marine park.

The Government has assured the Arnavon community of its support for the newly declared marine park.

The Government has assured the Arnavon community of its support for the newly declared marine park.

The Government has assured the Arnavon community of its support for the newly declared marine park.

The Government has assured the Arnavon community of its support for the newly declared marine park.

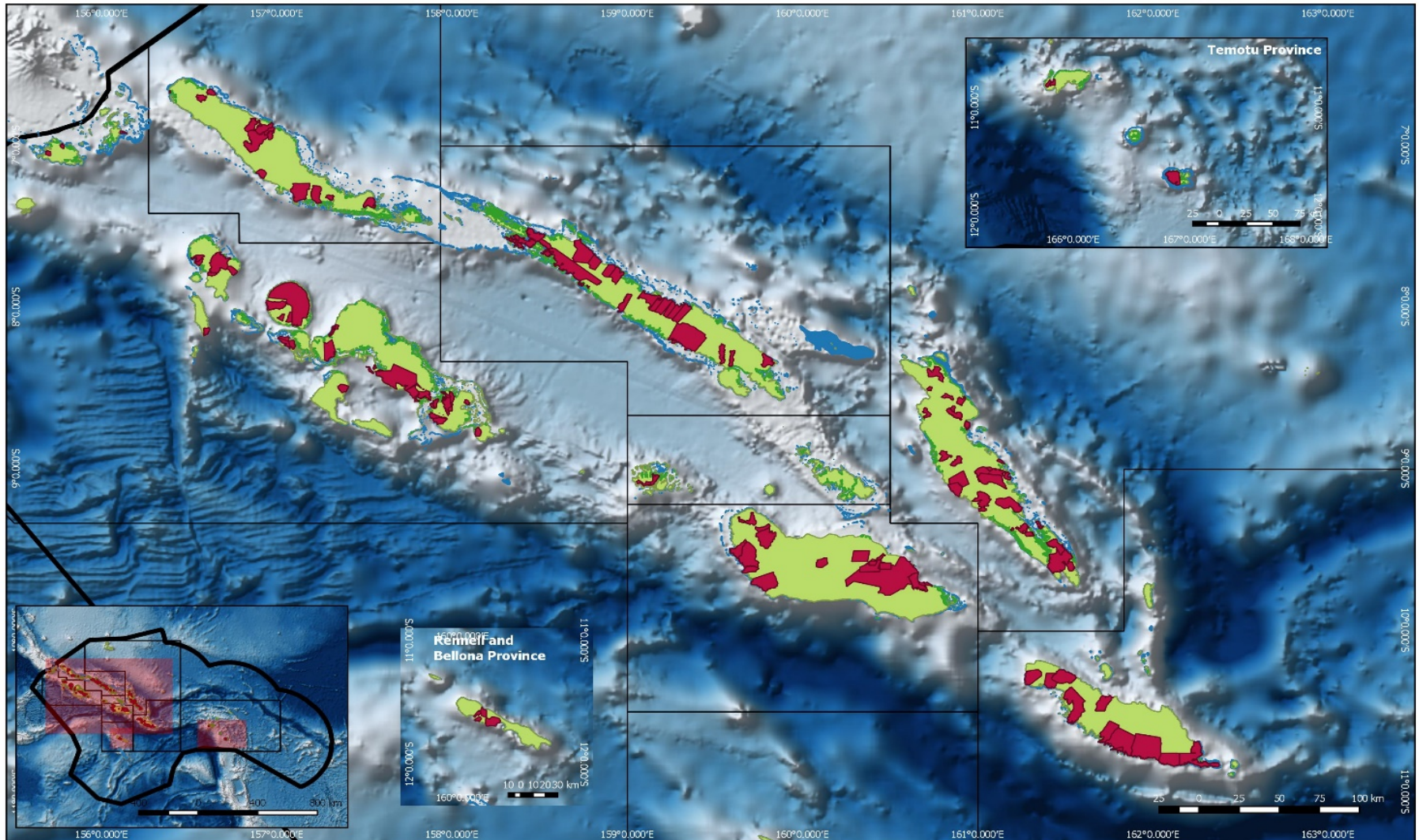
# Arnavon Community Marine Park (ACMP) 169.09sqkm

- Declared – 11 May 2017 (1995)
- **Nature Reserve-** Turtles, Eco-tourism, Research and Education
  - Highlights:
    - Turtles Nesting increase
    - KAWAKI Women Network
    - Enforcement on Poaching



# Challenges

## Race against Time?



- Current Logging sites
- Mangroves
- Reefs

**Current logging sites - 23. April 2018**

Data Source (Logging sites): Ministry of Forestry & Research  
Land outlines: Ministry of Lands and Survey  
Province Boundaries: Ministry of Lands and Survey



# Going forward....

- ❑ PA Declarations – applications, verifications and gazettal
- ❑ Strengthen PA Work Program and capacity within ECD and of relevant PA partners and stakeholders:
  - PA as core-business
  - Coordination, Communication
  - Extension services (National/ Provincial/ Community)
- ❑ Implementation of IFM Project; CEPF; Sky-Islands Reserves initiative....BIOPAMA
- ❑ Support for Community-level PA management and governance





*Tangio tumas!*