



10 Things that you can do to help reduce the spread of Invasive Species!

Invasive Species Schools Resource Kit Factsheet 04

1

Don't bring risky plant material, fruit or cut flowers into your country or take them to another country without advice from your Quarantine Service. Make sure shoes and personal items are clean and free of plant seeds and insects.

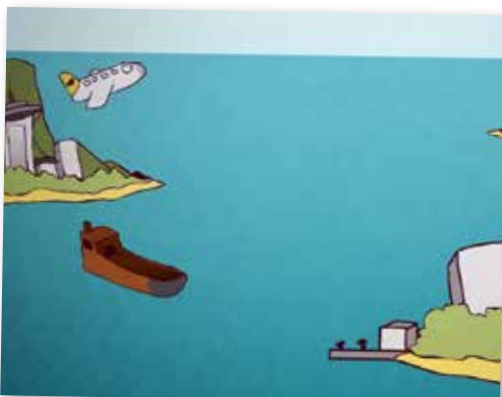


2

Check any plant material such as food crops and flowers for insects or other small animals before giving them to your friends, moving them to a different place on your island or to another island.

3

Always declare plant material or animal products to the Quarantine Service at the border control when you enter into a new country. This is usually done on an official form which must be completed before arriving at the border. This allows the Quarantine Service to check if there is a risk from such materials before they enter the country where they could cause a lot of damage.



4

When travelling to another island check the boat and cargo to make sure there are no animals or insects on board with you that may hitch a ride to the island. Keeping the boat and equipment maintained and clean will help with this. Don't forget the bottom of the boat which may have invasive species attached.

5

Please advise your Environment Agency immediately if you have found or seen a new species that you have never seen before and isn't common to your island. It helps if you can describe what you saw and where you saw it.



6

Spend time with your family in the garden and get to know the plants, animals and insects that are native and live there. This will help you recognise new plants and animals that arrive and when invasive species are impacting on your garden so you can take action quickly.

7

Clean your house and garden to prevent breeding habitats for invasive species. Overgrown areas and untidy houses can be a perfect breeding ground for invasive species.

8

Do not release or dump exotic animals or plants (including plant material) into the forest, wilderness, lakes, rivers or the ocean. Releasing these animals may cause harm to the environment and people.

9

Replace invasive weeds with native plants. If we plant more native trees we can help grow a population of beautiful trees and also reduce the opportunity for weeds to grow. It also helps if you weed the invasive plants on a regular basis as that helps to stop them from growing and flourishing.



10

Form a group in your community or school of Invasive Battlers to actively participate in invasive species actions. You can teach others to learn about the danger of invasive species and how you can all work together to protect your community.

To learn more about **Invasive Species** or to seek assistance and advice on any of the above please email sprep@sprep.org